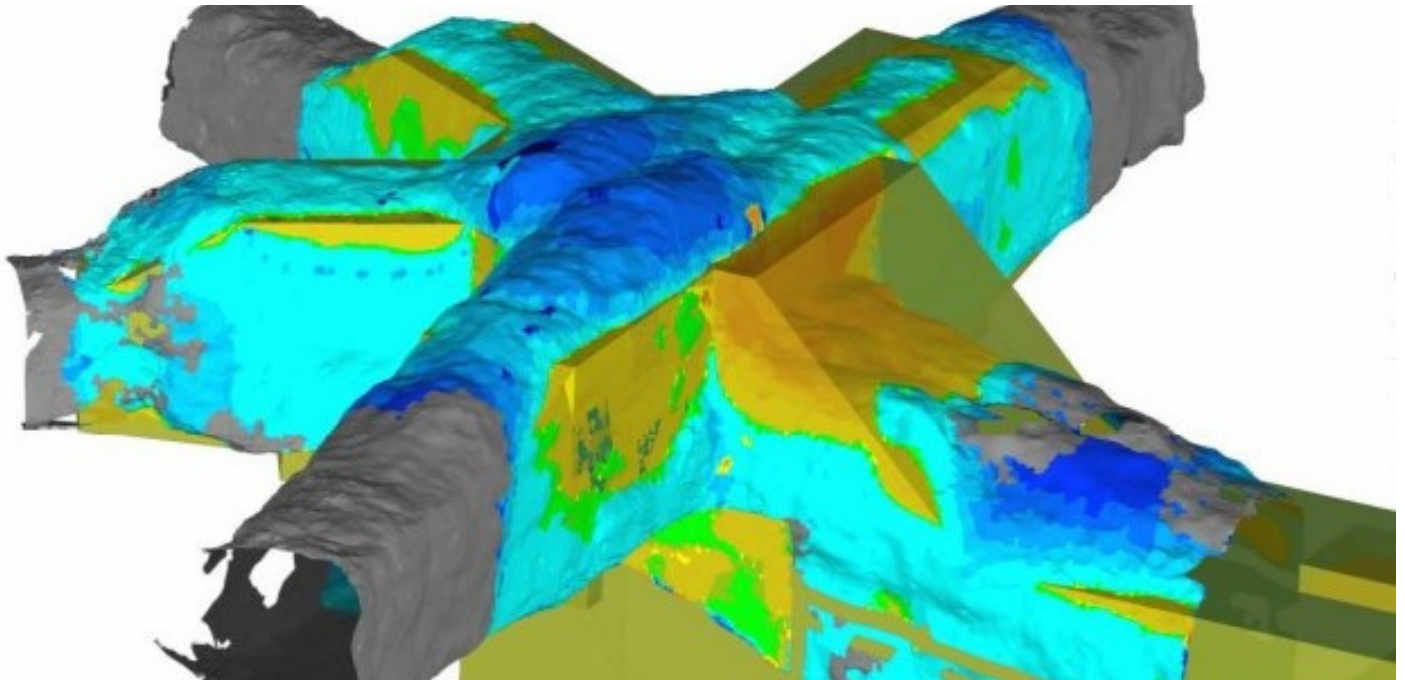




## CASE STUDY



# Chamber Tights

## COLLISION ANALYSIS



Process: 3D Scanning 3D Modelling

### CHALLENGE:

Determine if the 100m long chamber is ready for further construction work, run collision analysis to see if future equipment will fit in the chamber.

### SOLUTION:

Our client supplied a 3D model of the mining chamber which was compared with real time 3D scan data.

A 3D analysis was conducted on the 3D model and additional 2D analysis along sections of the 100m chamber focusing on corners and structural positions.

A complete colour deviation report was submitted.

### KEY ADVANTAGES

- Portable scanning technologies for onsite scanning
- Accurate scan data
- 2D and 3D Inspection reports
- Minimise error
- Fast data capture safely
- Experienced and skilled team